



The UNIVERSITY of OKLAHOMA
Health Sciences Center
College of Pharmacy

YOUR PRESCRIPTION FOR
INSPIRATION

APPLICATION GUIDE



2022





WELCOME TO YOUR FUTURE!

This informative guide provides the information you need to prepare your journey to our Doctor of Pharmacy (Pharm.D.) program.

Located near historic Bricktown in Downtown Oklahoma City, the OU College of Pharmacy is part of the OU Health Sciences Center, a comprehensive academic health center leading the state of Oklahoma in health care, medical research and unmatched interprofessional education.

With seven different health science colleges and university-owned hospitals, clinics, pharmacies and research facilities, your opportunities are unlimited on your path to a rewarding pharmacy career!

Small class sizes and a world-class education lead the way to your future in pharmacy!

We hope you find this guide a useful roadmap as you navigate the Pharm.D. application process. Please reach out any time you have questions!

WHY CHOOSE A PHARMACY CAREER?

Pharmacy combines science, health care, computer technology, math, and counseling. Pharmacists can be found in a variety of work settings: community pharmacies, hospitals, other clinical settings, the pharmaceutical industry, mail order, and more!

98%

Job or post-graduate placement within 12 months for COP graduates

\$121,060

Mean wage for Oklahoma pharmacists as of May 2020
Source: US Bureau of Labor Statistics

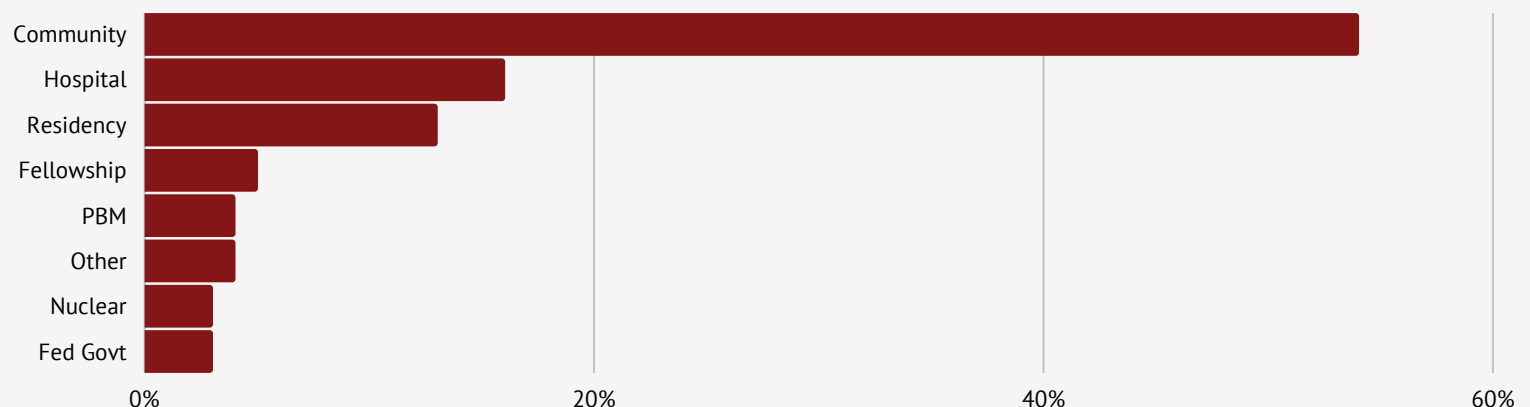
IS PHARMACY FOR YOU?

Do you...

- Like to help others?
- Pay attention to details?
- Like working on a team?
- Enjoy solving problems?
- Exhibit leadership and empathy?

PHARMACY CAREER PATHS

OU College of Pharmacy graduates have unlimited opportunities in their pharmacy careers. Below are some of the top areas recent graduates have chosen as their path:



WHY CHOOSE OU COLLEGE OF PHARMACY?



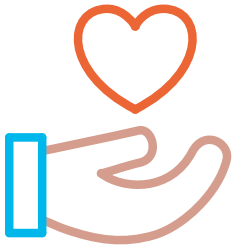
Residencies

We offer residencies in Ambulatory Care, Cardiology, Internal Medicine, Managed Care and Pediatrics.



Degree Options

You can choose to focus your electives and graduate with a degree option in Ambulatory Care, Leadership, Nuclear Pharmacy, Pediatrics or Research. We also offer a dual Pharm.D./MBA degree.



Interprofessional Education

Train and network with faculty and students from seven different colleges: Medicine and PA, Dentistry, Nursing, Allied Health, Public Health, and Graduate (M.S./Ph.D.)



Research

We hold the highest designation for research activity as a Carnegie R1 institution with a focus on cancer, diabetes, infectious diseases, and the neurosciences.



Unique Opportunities

Other opportunities include the OK Poison and Drug Information Center, an onsite fully operational nuclear pharmacy, a 6:1 faculty/student ratio, University-owned pharmacies, hospitals, clinics and over 100 other training sites.



Pharm.D. Curriculum

First Year

- Pharmacy Practice
- Biochemistry
- Pharmacy Math
- Human Physiology
- Pharmaceuticals
- Principles of Drug Action
- Immunology
- Drug Info Systems

Second Year

- Pharmacy Practice
- Pharmacokinetics
- Public Health & Health Policy
- Clinical Communication
- Pharm Health Module
- Management
- Patient Assessment
- Cardiology
- Respiratory & Renal
- Dermatology
- Electives

Third Year

- Pharmacy Practice
- Pharmacy Law & Ethics
- Biostatistics
- Endocrinology
- GI/Rheum
- Infectious Diseases
- Drug Literature Evaluation
- Clinical Toxicology
- Hemat/Oncology
- Neuro/Psych
- Nonprescription Products
- Electives

Fourth Year

- Community Pharmacy
- Hospital Pharmacy
- Adult Medicine
- Ambulatory Care
- Selective Rotation I-V
- Seminar

HOW TO BEGIN A PHARMACY CAREER



Challenge yourself academically

- Take as many science and math courses as possible
- Keep your GPA at a 3.0 or above so you don't have to take the PCAT



Demonstrate care for others

- Be involved on your campus and in your community
- Be a leader
- Get some pharmacy experience (paid or unpaid)



Demonstrate desirable attributes

- Build relationships with advisers, professors, employers, or pharmacists so you can ask for a reference when you apply
- Develop self-awareness, self-management, and awareness of others
- Develop your problem-solving, critical thinking, & communication skills



Plan your application path early

- Schedule an advisement appointment with OUCOP Student Affairs
- Keep in mind the application process takes almost a year in advance of the year you plan to start
- Determine if you plan to apply via Fall Priority (Oct 1), Spring Priority (March 1) or Summer (June 1)

PRE-PHARMACY COURSE REQUIREMENTS

We require a total of 64 semester hours for admission: 34 hours of math and science and 30 hours of non-science electives.



Math/Science Requirements

- Calculus
 - 3 hours
- Physics
 - 3 hours
- General Chemistry 1 w/lab
 - 4 hours
- General Chemistry 2 w/lab
 - 4 hours
- Organic Chemistry 1
 - 3–5 hours
- Organic Chemistry 2
 - 3–5 hours
- Biological Sciences
 - 8 hours total
- Microbiology w/Lab
 - 4 hours

Elective Requirements

- English 1
 - 3 hours
- English 2
 - 3 hours
- Electives from approved subject areas
 - 24 hours

Approved Subject Areas:

Fine Arts, History, Political Science, Anthropology, Humanities, Geography, Philosophy, Literature, Social Science, Behavioral Science, Foreign Language, Communications, Business, Computer Science, Leadership, Mathematics (9 hours maximum)

COMPLETING COURSE REQUIREMENTS IN TWO YEARS

On this page you will find a suggested plan of study if you want to complete your prerequisites in two years. This plan is only suggested. Contact the Student Affairs office for individual advisement.



Year One

- **Summer Semester**
 - College Algebra or PreCalculus (counts as an elective)
- **Fall Semester**
 - General Biology
 - General Chemistry I
 - English Comp I
 - Elective–3 hours
- **Spring Semester**
 - General Microbiology
 - General Chemistry II
 - English Comp II
 - Calculus

Year Two

- **Summer Semester**
 - Electives–6 hours
- **Fall Semester**
 - Organic Chemistry I
 - Human Physiology (or any other biological science with 4 hours of credit)
 - Electives–6 hours
- **Spring Semester**
 - Organic Chemistry II
 - General Physics
 - Electives–6 hours

2022 APPLICATION INFORMATION



- OUCOP admits a new class to begin each fall semester.
- Only completed applications are considered.
- A completed application consists of the PharmCAS application and two letters of reference.
- If you are invited to interview, you must also submit an OUHSC application, which is by invitation only.
- We use a rolling admissions basis which means we fill seats as we interview.
- Applicants must successfully complete prerequisite courses, and provide an official transcript showing completion by August 5 of the year they plan to enter.
- PharmCAS application opens July 14, 2021.
- Applicants must have a cumulative GPA 2.50 GPA to be considered for admission.
- Applicants who have a 3.0 GPA are not required to take the Pharmacy College Admission Test (PCAT).



2022 APPLICATION TRACKS



Fall Priority Application Track

Application Deadline: October 1

Fall Priority Interviews: November

Admission Decision: December 1



Spring Priority Application Track

Application Deadline: March 1

Spring Priority Interviews: Feb, Mar, Apr

Admission Decision: May 1



Summer Application Track

Application Deadline: June 1

Summer Interviews: June

Admission Decision: July 1

STEPS TO APPLYING



1

Complete the PharmCAS Application

Application for admission requires submission of the Pharmacy Centralized Application (PharmCAS). To access the application, go to <http://pharmcas.org>.

2

Letters of Recommendation

Provide two letters of recommendation via PharmCAS. Letters should come from those who can evaluate your potential for success and a career in pharmacy.

3

Holistic Admissions Application Review

Each application is evaluated in three main areas: academics, experiences and attributes. We also look for applicants who have excellent communication skills.

4

Complete OUHSC Application

Those who are invited for an interview will be required to complete the OU Health Sciences Center supplemental application. The supplemental application fee is \$50.00.

5

Complete a Personal Interview

The Admissions Committee requires a personal interview to assess an applicant's communication skills. Interviews are by invitation only and invitations are sent via email.

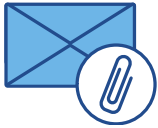
Start Your Journey Now



<https://pharmacy.ouhsc.edu>



<https://bit.ly/OUPharmDAdvise>



**OUPharmD@
ouhsc.edu**



(405)271-6598



**1110 N Stonewall Avenue
OKC, OK 73117**



@OUPharmAdmissions

**Follow us on Facebook &
Instagram!**

The University of Oklahoma Is an equal opportunity institution
www.ou.edu/eoo For accommodations, contact the OU College of Pharmacy Student Affairs at (405) 271-6598.