

# Graduate Affairs & Research

VOLUME 3, ISSUE I

JANUARY 2005



**COLLEGE OF PHARMACY**  
**UNIVERSITY OF OKLAHOMA**  
**HEALTH SCIENCES CENTER**

## Special points of interest:

- *Yamanouchi Seed Grant Program continues*
- *Cancer Research Funding*
- *Graduate Students, Fall 2004*

## Inside this issue:

<i>Yamanouchi seed grant program</i>	1
<i>Graduate Students Fall 2004</i>	2
<i>2005 GREAT Symposium</i>	3
<i>Website for new investigators</i>	4
<i>Human Participant Research</i>	4

## Yamanouchi USA Foundation Seed Grant Program

The College of Pharmacy will once again offer the Yamanouchi USA Foundation Seed Grant Program for 2005. Priority will be given to the following types of applications:

1. Collaborative projects between the basic science and clinical science departments.
2. New investigators who are currently unfunded.
3. Established investigators wishing to develop a new area of research activity.

### Purpose

Seed grants provide funds to collect preliminary data for proposals that will be submitted for extramural funding. The maximum amount of each award is \$10,000. Proposals should be developed that can be accomplished within this budget amount, although meritorious proposals with higher budget requests may be considered.

### Application

The research proposal is expected to consist of up to four single-spaced pages, not including references, figures or tables (one inch margins, type density not more than 15 cpi) and organized into the following sections: Specific Aims, Background and Significance, Preliminary Data, Experimental Design and Methods, Future Goals and References.

### Review

Proposals will be reviewed by the College of Pharmacy Ad Hoc Research Development Committee, which will make recommendations regarding funding to Dean Voth. The committee will

evaluate proposals on the feasibility of the project, budget justification and the potential for future extramural funding.

**Application deadline:**  
**February 15, 2005**

More details and Seed Grant application forms are available on the website.

## Funding for Cancer Research

The OU Cancer Center has announced that seed grants are available for beginning investigators developing cancer research programs. **Application deadline is February 15, 2005.**

All areas of cancer-related research including:

- Basic biomedical research
- Clinical research
- Psychosocial and behavioral research
- Health policies and services
- Cancer in poor and underserved
- Childhood cancer

Eligibility requirements include: independent investigator (faculty level position); within 8 years of first independent research position; no national peer-reviewed funding; US citizen, non-citizen national or permanent resident.

One year funding (\$20,000 maximum) is available. Information and application forms are available at:

<http://oucancercenter.ouhsc.edu>

Questions can be e-mailed to: [mariehanigan@ouhsc.edu](mailto:mariehanigan@ouhsc.edu)

## University of Oklahoma College of Pharmacy Graduate Students

(1st date is entry date; second date is anticipated graduation date)



**Matt Brammer**  
Pharm.D.—2003; 2007  
MS—2004; 2007  
Gallucci



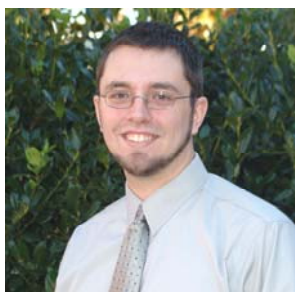
**Tam Bui**  
Ph.D.—2000; 2005  
Farmer



**Byron Curtis**  
Ph.D.—1997; 2005  
Kemp and Reinke



**Gautam Damera**  
Ph.D.—2000; 2005  
Sachdev



**G.T. Dolan**  
Pharm.D.—2003; 2007  
MS—2004; 2007  
Shankar



**Tara Jenkins**  
Ph.D.—2000; 2005  
Farmer



**Shelly Keast**  
M.S.—2004; 2008  
Jacobs



**Yun Liu**  
Ph.D.—2001; 2005  
Gallucci



**Shalley McDorman**  
M.S.—2003; 2007  
Farmer



**Isaac Mitropoulos**  
Pharm.D.—2001; 2005  
MS—2003; 2005  
Hoffman



**Thi Nguyen**  
Ph.D.—2004; 2008  
Pento



**Quentin Phung**  
Ph.D.—1999; 2005  
Farmer

***Congratulations to Matt Brammer!*** Matt presented his summer work with Dr. Rae Matsumoto at the Southeastern Pharmacology Society Conference in Mississippi. He won the “best poster” competition with his research on “Involvement of sigma receptors in the actions of 3,4-methylenedioxymethamphetamine (MDMA).” Matt is one of our Pharm.D./M.S. students.

## Graduate Students—Fall 2004 (cont'd)



**Margarita Rush**  
Pharm.D.—2001; 2005  
M.S.—2003; 2005  
Hagemann



**Preeti Tendolkar**  
Ph.D.—1999; 2005  
Shankar



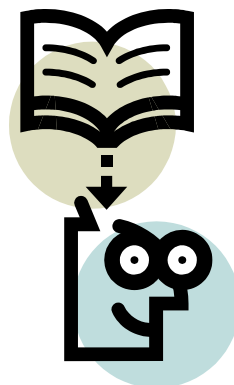
**Prestina Thompson**  
Pharm.D.—2003; 2007  
M.S.—2004; 2007  
McShan



**Craig Trusley**  
Pharm.D.—2003; 2007  
M.S.—2004; 2007  
Kupiec



**Kelly Williamson**  
Ph.D.—2003; 2006  
Reinke



## 2005 GREAT Symposium March 29-31

The Graduate Student Association has been hard at work planning the 2005 GREAT Symposium. An effort has been made to condense the symposium so that more students can participate in more activities.

The symposium is scheduled for March 29 through March 31.

In the coming days you will receive information about abstract submissions and important deadlines.

Also, the GREAT Committee has planned several GREAT pre-workshops designed to help students prepare their abstracts, posters, and presentations. These workshops will be held early next semester and a detailed schedule will be sent out as soon as the dates are finalized.

The Graduate Student Association and the Graduate College would like to request that all departments and programs NOT schedule speakers, symposiums, meetings, etc. during these dates so that we can encourage full participation by the Graduate Students and Faculty.

Thank you for your cooperation!

James J. Tomasek, Dean, Graduate College

Pamela Williams, Chair, 2005 GREAT Committee.

## Upcoming Grant Deadlines.....

American Heart Association, Heartland	January 11, 2005
American Diabetes Association	January 15, 2005
Juvenile Diabetes Research Foundation	January 17, 2005
OCAST Applied Research (OARS)	January 26, 2005
National Institutes of Health ( <i>New Research &amp; all PPG &amp; Center applications</i> )	February 1, 2005
Dept. of Defense, Breast Cancer Program	February 1, 2005
OCAST Health Research (HR)	February 2, 2005
Presbyterian Health Foundation Seed & Bridge Grants	March 8, 2005

**Please note that if you are submitting an electronic proposal or if you are serving as a Subcontractor on another institution's budget, your proposal must be routed through ORA just like any other grant application prior to submission to the funding agency.**

More grant information and many form pages are accessible through the ORA website: <http://w3.ouhsc.edu/ora/>.

The ORA office hours are Monday through Friday from 8 a.m. to 5 p.m.

## More News You Can Use Regarding Grants & Contracts

### NIH ESTABLISHES WEBSITE FOR NEW INVESTIGATORS

The Office of Extramural Research (OER), NIH, announces the posting of a new website that articulates NIH's continuing commitment to new investigators (see [http://grants.nih.gov/grants/new\\_investigators/index.htm](http://grants.nih.gov/grants/new_investigators/index.htm)). The website describes current policies, data related to the influx of new investigators, resources that new investigators can use to understand and work with the NIH, and helpful hints that might be useful in constructing a first application for NIH support. The OER solicits additional suggestions for non-commercial content for this website. Visitors who know of additional resources can send suggestions to [OEPMail-box@mail.nih.gov](mailto:OEPMail-box@mail.nih.gov).



### GRANTS.GOV UPDATE

If you need access to a comprehensive resource with all the information on the Grants Streamlining Initiative, which encompasses the activities implementing Pub.L.106-107, go to the Grants.gov website. The site now provides information on current initiatives, organizational structure, monthly status reports, work group initiatives, and annual reports to Congress. The web address for the site is as follows: [www.grants.gov/GrantsSI](http://www.grants.gov/GrantsSI).

### NIH Revises Review Criteria

The National Institutes of Health (NIH) has revised its criteria for evaluating research grants. Reviewers will use the new criteria starting in the summer of 2005 and will assign a single, global score to each scored application. "The score," the announcement states, "should reflect the overall impact that the project could have on the advancement of science. The emphasis on each criterion may vary from one application to another; and an application need not be strong in all categories to be judged likely to have a major scientific impact."

NIH made the revision primarily to complement the NIH Roadmap initiatives. The Roadmap has been designed to accelerate and strengthen the biomedical research enterprise, but the scientific community believed that existing review criteria undervalued important aspects of biomedical research.

The revision incorporates Roadmap initiatives, such as interdisciplinary, translational, and clinical research projects, into the criteria. For example, the "Significance" criteria has been expanded from asking what effect these studies will have on concepts and methods that drive the field, to asking what effect these studies will have on concepts, methods, technologies, treatments, services, or preventative interventions that drive the field.

### RESEARCH INVOLVING HUMAN PARTICIPANTS—PLEASE READ

The University of Oklahoma Health Sciences Center has updated the education certification policy for faculty and staff engaged in research involving human participants. This policy was first introduced as part of a plan for improving the University's human research program and was submitted to the Office of Human Research Protections (OHRP). The revised policy includes the following requirements:

- Attendance of the IRB In-House Education Course
- Successful completion of the Dunn & Chadwick 'Protecting Study Volunteers in Research' Manual Self-Exam
- Signed & Dated Written Attestation Document

It imperative that all faculty and staff who are engaged in research on this campus adhere to this policy. The mission of the University has been to 'raise the standard' in the area of participant protection in research and to incorporate an education program that will provide each investigator with a solid background in the areas of ethics and federal regulations prior to embarking on his/her respective research.

Thank you for your continued support in the University's efforts to protect the welfare of research participants.—*Joseph J. Ferretti, Ph.D.*